


$$40 \times 3 =$$



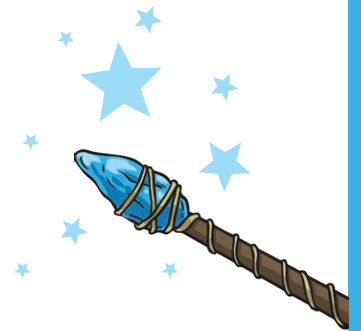
twinkl.com


$$80 \times 4 =$$



twinkl.com


$$8 \times 30 =$$



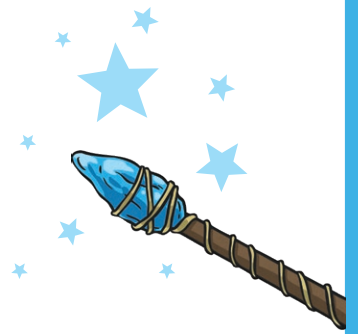
twinkl.com


$$20 \times 3 =$$



twinkl.com


$$30 \times 4 =$$



twinkl.com


$$3 \times 70 =$$



twinkl.com


$$90 \times 8 =$$



twinkl.com


$$120 \times 4 =$$



twinkl.com


$$30 \times 30 =$$


twinkl.com


$$3 \times 100 =$$


twinkl.com

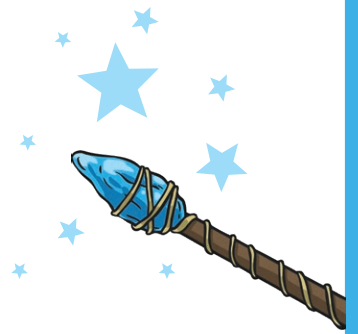

$$1 \times 400 =$$


twinkl.com


$$6 \times 30 =$$


twinkl.com


$$8 \times 60 =$$



twinkl.com


$$30 \times 11 =$$



twinkl.com


$$11 \times 4 =$$



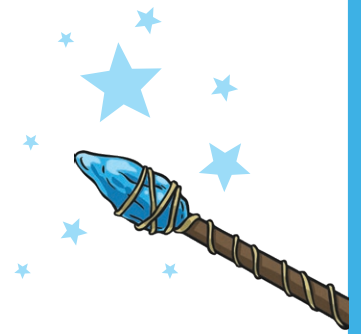
twinkl.com


$$30 \times 50 =$$



twinkl.com


$$30 \times 9 =$$



twinkl.com


$$3 \times 30 =$$



twinkl.com


$$5 \times 40 =$$



twinkl.com


$$80 \times 3 =$$



twinkl.com



Multiplication Magic Cards **Answers**

Question	Answer
1. $40 \times 3 =$	
	120
2. $80 \times 4 =$	
	320
3. $8 \times 30 =$	
	240
4. $20 \times 3 =$	
	60
5. $30 \times 4 =$	
	120
6. $3 \times 70 =$	
	210
7. $90 \times 8 =$	
	720
8. $120 \times 4 =$	
	480
9. $30 \times 30 =$	
	900
10. $3 \times 100 =$	
	300

11. $1 \times 400 =$	
	400
12. $6 \times 30 =$	
	180
13. $8 \times 60 =$	
	480
14. $30 \times 11 =$	
	330
15. $11 \times 4 =$	
	44
16. $30 \times 50 =$	
	1500
17. $30 \times 9 =$	
	270
18. $3 \times 30 =$	
	90
19. $5 \times 40 =$	
	200
20. $80 \times 3 =$	
	240